

High Tide News

Local
Postal Customer

PRRST STD
ECRWSS
U.S. POSTAGE
PAID
EDDM RETAIL

March 2016

Vol. 4 Num. 3

Local news for the people, by the people

www.hightidenews.com

Sussex Home Grown Success Story: Cecile Steele's Pullet Surprise

By Sandie Gerken

Ninety three years ago in the spring of 1923, an Ocean View housewife, Cecile Long Steele inadvertently started a multi-billion-dollar industry when she ordered 50 Barred Rock chicks to fill out her small flock of laying hens....



"The Colonel" – A watercolor by Sandie Gerken

She placed her order with William Vernon Steen, Sr. owner of a Dagsboro hatchery. Imagine her surprise when she accidentally received 500 chicks instead!

Mrs. Steele grew a small number of laying hens to put eggs on the table and to supplement the family income by selling any excess egg supply. Each spring she would order 50 chicks to replace

losses in her layers. Thrifty and industrious, she saw a chance to use this mistake

to her advantage and make a little cash. She kept the extra chicks and housed them in a piano box until a small shed was built in which to raise them. In 18 weeks, she had 387 survivors, weighing about 2.5 pounds each. She sold them for 62 cents per pound, profiting about \$775.



Cecile Steele's Chicken Farm, Courtesy DE Ag. Museum



Cecile Steele, Courtesy DE Ag. Museum

Encouraged by her windfall, the hard-working Mrs. Steele ordered 1000 birds the next spring and sold them at 50 cents per pound. By 1926, she was raising about 10,000 chickens. Her husband, Wilmer quit his job with the US Coast Guard in Bethany to build more chicken houses and help with their profitable chicken farm. The Delmarva Poultry Industry of selling broiler chickens

continued on page 2

Our Customers Make Us Successful... Our Knowledge Sets Us Apart



MILLVILLE'S



PET STOP

Locally owned & operated

PET STOP

Providing Compassionate
Pet Care for Ten Years

FENWICK



PET STOP

Willia Peoples, Proprietor

Ten years ago, **Millville's Pet Stop** opened its doors on Atlantic Avenue in Millville. We specialize in high quality premium pet foods and supplies. We also offer full service grooming at the Millville location. In 2014, we opened a sister shop – **Fenwick Pet Stop** – on Coastal Highway, serving the needs of the Fenwick, Ocean City and Rt. 54 area.

Millville's Pet Stop opened in January 2006. We repurposed a local landmark – a large concrete building built in 1948. It began with an idea and a strong business partner who believed in me. He new he

could mentor me into a successful business leader.

Why did you go into the business of pets?

I felt we could "do it better". We knew we had the passion to build a business based on relationships, products and services for the life of the pet. I (Willia) had pet nutrition knowledge and was disappointed in the lack of quality products available in our area.

Over the past 10 years we have been warmly received by our community – a wonderful feeling. And in the future, we hope to increase our community involve-



Willia Peoples, Proprietor, in her beautiful Fenwick Pet Stop location.

ment to include more events at both locations.

Great moments

In 2011, we began working with local cat rescue groups to place kitties in loving homes. To date, we have assisted in over 500 adoptions.

"We have been recognized as the Coastal Style Pet Supply Store of the Year for Sussex County in 2014 & 2015."

We take the time to connect with our customers
continued on page 2

Pet Stop Providing Pet Care for more than 10 years, continued from page 1



Millville Pet Stop

Millvillepetstop@yahoo.com
Millville phone: 302.539.9382
35167 Atlantic Ave
Milleville, DE 19967

tomers & their parents (meaning the pet is our front-line; customers – the parents – are the medium between us and them). We hand select our inventory, therefore we only carry what meets our standards. Our knowledge goes from pets with fins, fur or feathers – even scales or hard shells.

We love what we do – you're bound to be successful when you can say that!

We seek any and all people who are pet guardians. From one end of the budget spectrum to the

other – we love them all and have products to meet their needs.

Stop in and find out why Pet Stop is so popular & well-respected in Sussex County

"We are big enough to have everything you need – yet small enough to care. We build relationships with families. Sometimes we know the pet a little better than the pet parents (please don't fault us for that—it's a pet lover "thing")."



"We believe sharing our knowledge will help you make the best choices whether at our shop or elsewhere.

"We have deep ties to the local area. We are constantly learning, evolving and refining our product selection. Our Groomers are amazing and our Aquatics department inspires children and adults alike.

"We invite you to be a part of the Pet Stop experience."



Fenwick Pet Stop

Fenwickpetstop@yahoo.com
Fenwick Island: 302.581.0046
1200 Coastal Highway
Fenwick Island, DE 19944

Cecile Steele's Pullet Surprise, continued from page 1

as a meat source was born.

Within five years of Cecile's pioneering success, the Steeles were raising over 25,000 birds. In 1928 there were more than 500 poultry growers in southeastern Sussex County as farmers switched from layers to broilers.

Prior to Cecile Steele's brilliant, accidental enterprise, chickens were raised only in small flocks in barnyards, commercially useful only for egg production. Chickens raised in the barnyards were scraggly scavengers and their meat was tough. A old, non-laying hen was destined for the stew pot for the household. Young male cockerels were culled from the spring flocks and sold to restaurants as a delicacy meat, but this was not a primary industry.

Raising chickens for meat had been tried before. Elsewhere in the U.S. and locally, others had raised broiler sized chickens on a small scale. In 1922 Asa Bennett of Frankford and Sally Hall, also of Frankford, had raised some broilers, but the attempts were not very profitable.

The new broiler industry met an economic need, bringing new jobs. Delmarva was experiencing hard times after WWI and the new agribusiness propped up the peninsula's economy just as the Great Depression and stock market crash devastated the country. The chicken industry expanded the Hatchery businesses expanded and support industries like feed mills, corn, grain, and soy-

bean growers, and processing plants created more jobs.

According to Bill Williams in his book *Delmarva's Chicken Industry: 75 Years of Progress*, Sussex County was the right place at the right time. The Delmarva peninsula

was ideally suited for truck or railroad transportation of processed chickens to urban markets like Philadelphia and New York. Building costs were low, timber widely available, labor costs and land prices were cheap, enabling the average person

to finance a chicken farm. The mild climate kept heating costs low and allowed farmers to let flocks outside in warm weather in fenced yards.

The poultry industry has evolved from a sideline business for farmers to a major agribusiness with many improvements in genetic breeding, nutrition, and processing techniques, such as automated plants to kill, eviscerate, and package chickens for market. Better grain production, medications for chicken diseases have led to healthier, larger, plumper broilers.

Early techniques for broiler production were labor intensive. Chicks had to be kept warm by keeping them close to coal-burning brooder stoves. They were fed manually by placing feed called mash on paper near the stoves. Water crocks with ceramic trays were placed near the stoves. As the chicks grew, they could eat from a feeder trough, filled by farm

laborers from bags of feed moved around the houses by wheelbarrow. Later, drip water trays were used. The flock had to be monitored by walking through the houses periodically during the days to cull out dead and sick birds. A farmer lived and breathed

on his chicken farm 24-7. The chicken houses in the 40s, 50s, and 60s were long, low, wooden structures, with windows in each "room" and a two story structure in the middle. In the bottom level was the feed storage room, while the

second story was an apartment for hired farm laborer. The time consuming jobs were improved by automated feeders and ongoing technique improvements.

Initially, once the chickens were ready for market, growers accepted the best offer from buyers, who examined the birds at the farm and provided the chicken catchers. The birds were shipped live to northern markets. Later, chickens were killed, eviscerated, and dressed at processing plants. Early 1930s processing plants in Sussex were: H&H Poultry of Selbyville, Eagle Poultry of Frankford, and Millsboro Poultry. In 1941, Harry Pack of Dagsboro and his brothers opened the largest processing plant, Sussex Poultry Co. in Milford.

Growing chickens was a volatile industry with price fluctuations, increased feed and technology costs, creating significant risks for the farmers. In the 1950s, growers and feed dealers began entering into contracts that resulted in the feed companies owning the flocks and providing the feed, medications, etc. The grower provided the houses, utilities, and labor. The company sold the birds,



Sign for Delmarva Poultry Growers Exchange, image in public domain

dividing the profit with the grower. This contract increased risks for the feed companies, who began to force additional costs to the grower. In 1952, the Eastern Shore Poultry Growers Exchange was created in Woody's Diner in Selbyville, later moving to its own building down the street. Auctions were carried on daily at the Exchange with chicken

continued on page 6

High Tide News

Local news for the people, by the people

High Tide News is published every month, year-round, and delivered by the U.S. Post Office to homes in Sussex County, Delaware.

Subscriptions are available at: <http://www.hightidenews.com/subscribe.html>

Volume 4 Number 3 March 2016

Publisher: Layman Enterprises
Editor: Judy Layman

Contributing Writers: Sandie Gerken, Vincent Paez, Casey Lyn Goold, Nicholas Shevland, Bernadette Dunn, John J. Meggiolaro

Please send correspondence to:

High Tide News
PO Box 870, Ocean View, DE 19970

Phone: 302-727-0390
email: news@hightidenews.com
online: www.hightidenews.com
office: 118 Main Street
Millsboro, DE 19966

All content is the property of High Tide News and cannot be reproduced without prior written consent.

Disclaimer: The opinions, beliefs and viewpoints expressed by the various authors in this newspaper do not necessarily reflect the opinions, beliefs and viewpoints of the owners or staff of High Tide News.

The author of each article published in this newspaper owns their article. No reproduction of articles without the express consent of the author and High Tide News.

Submissions: An article may be submitted for possible publication in this newspaper by emailing your article to news@hightidenews.com or submitting online at www.hightidenews.com. Please include your full name, contact information and a short bio.

To Advertise, Submit an Article, or Subscribe, simply call: 302-727-0390 or email: info@hightidenews.com

Author, Sandie Gerken lives in Dagsboro, DE. As a native Sussex Countian, local history is one of her passions. Retired now, she devotes her time to genealogy research (her greatest passion since 1978), watercolor painting, grandchildren, soccer for kids with disabilities, books, and things creative and historical. She recently authored the book *Memories of the Clayton Theatre* as a fundraiser to help the Clayton go digital. She is now exploring her writing skills with local history articles for High Tide News.





Delmarva Resorts Realty partners with Real Estate Institute of Delaware to offer Real Estate Classes

Delmarva Resorts Realty is excited to announce their partnership with Real Estate Institute of Delaware and owner Larry Tims! Our first class launched January 12, 2016 at our office at 1632 Savannah Road, Lewes with 28 students who are scheduled to graduate in March. We are very excited to be able to offer Pre-Licensing classes to the local community and have three more classes on the calendar for 2016. The next class starts April 12 and registration is now open. A scholarship program is currently in the works to honor the memory of Delmarva Resorts Realty owner Emma Payne's parents



Ann and Leon Leslie! Emma's parents owned Leslie Realty in Edgewater, MD where Emma grew up in a real estate family and the scholarship will help the legacy live on for her family and future generations of new Real Estate Agents. Along with the Pre-Licensing courses, we will also offer Real Estate Agent Continuing Education courses that are required for agents to renew their licenses by April 30.



Ann and Leon Leslie



The first real estate class launched January 12, 2016 at the Delmarva Resorts Realty office at 1632 Savannah Road, Lewes with 28 students who are scheduled to graduate in March.

REAL ESTATE CAREER OPPORTUNITY

Delmarva Resorts Realty is now interviewing new and experienced agents.

- Mentoring available.
- 60% agent commission with no office fees
- 70% with \$100 monthly fee
- Supportive and friendly environment
- No mandatory training or meetings
- No errors and omissions fee
- FREE signs

Give us a call to schedule your confidential consultation.

302-644-3687

Emma Payne

Delmarvaemma@gmail.com

Need your Real Estate license?

New classes forming April 12, July 11 and September 13, 2016

Call for information & to reserve your seat today!

DelMarVa 1632 Savannah Road, Suite 2
RESORTS REALTY Lewes, DE 19958

We are also partnering with local business to offer various education classes and the Delaware Housing Authority just held a seminar about a program that is offering buyers an \$8000 loan to purchase a home. This money can assist buyers with closing costs and down payments! Upcoming classes will be offered for first time home buyers, Veterans loans, distressed property assistance, how to buy at Sheriff sales, investing in real estate, tips for vacation rentals, how to buy new construction, the benefits of moving to Delaware and much more.

At Delmarva Resorts Realty, we are passionate about serving both our clients and our agents with the best education! For more details about any of the information in this article, please call Emma Payne at 302-644-3687 or email her at Delmarvaemma@gmail.com.

Real Estate Institute of Delaware

At Real Estate Institute of Delaware, we offer the classes required by the Delaware Real Estate Commission prior to testing for a Delaware real estate license. And we are proud to be a Delaware Real Estate Commission approved provider. We began offering Delaware real estate licensure classes three years ago and have become the largest growing course provider in Sussex County. Our instructors are hands-on professionals with many years in the real estate profession.

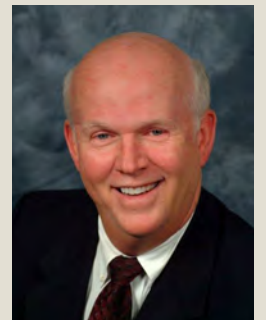
Founder/owner, Larry Tims

Over 27 years in the real estate profession

18 years as Broker of Record for a Delaware real estate firm

Served as Director, Treasurer, and Chairperson of many real estate associations throughout Delaware and well as served on the National Association of Realtors Board of Directors Larry was also Past Dean of Education for Delaware Association of Realtors and served on various local community boards.

Real Estate Institute of Delaware is excited about the opportunity to provide these classes in the DelMarVa Resorts realty classroom and look forward to serving our Sussex County students in their real estate education needs there.



THE WONDER OF A DONUT

By John J. Meggiolaro

Many years ago, I was driving through the midwest when I suddenly had a strong craving for donuts. As luck would have it, I found a small, dingy donut shop in a tiny strip mall just off the main road I was traveling.

As I meandered up to the counter and sat on one of those spinning counter stools,

a very kind waitress asked me what I wanted. Without hesitation I blurted out "two chocolate glaze donuts and a cup of coffee". Not missing a beat, the waitress reached under the counter a pulled out a coffee mug and placed it right in front of me. She then mentioned that she would be right back with the coffee and my donuts.

While she headed away I noticed that there was some type of writing on the mug itself and so I took the mug in hand and read what had been captured:



As you ramble on through life, no matter what the goal, keep your eye upon the donut and not upon the hole.

Unbelievable! One of the absolute keys to personal success was discovered by me on a coffee mug in a donut shop somewhere in the midwest. Truth is, the image of a donut is one of the guiding tenets of my coaching practice and speaks directly to the concept known as the Sphere Of Control. Simply put, there are two spheres impacting us—one that we

can control and one that we have no control over. This concept along with the image of a donut helps people to understand that their primary focus and attention should be directed toward those things they have control of or over (the donut/the goal) and not on those things they have little or no control over (the hole).

Unfortunately, many of us remain too worried about the hole and loose sight of what is truly important. So think about where your focus is currently and determine if you need to look at your donut much differently than before. It could make a positive difference as to how you spend your time and energy going forward.



John is a Principal and the Managing Partner of the Travid Group, a consulting firm that specializes in Developmental Coaching (mastering the art of self-leadership). John can be reached at 302-945-1123 or via email at jmeggi@thetravidgroup.com.

How Do They Do That?

By Richard Stutz

A recent letter to the Editor of The Baltimore Sun, took issue with the amount of residential development taking place in the Baltimore City neighborhood of Hampden. With housing stock in the Jones Falls Valley averaging over 125 years of age, the writer charged, and with water and sewer pipes creeping up on the century mark, how could this go on without any master plan (and a budget) to improve Public Works. His claim was that this was irresponsible, and said it was the strongest case for his relocating to "tax-friendly Delaware". Now this is where I shift gears. I regularly get the question from prospective buyers of a vacation, retirement or second home (there's a difference), how do they do that in Delaware, you know, keep the taxes so low, what's going on... is it, you know, some kind of a "shell game"? (For you younger readers, the reference is to a carnival table game, where that fellow with some very fast hands, moved the pea around from under one walnut shell to another, and challenged the slower among us, to wager

that they could surely select the shell under which the pea did hide). Now I have to say, and I can only speak about Sussex County, and there are 2 other counties in The First State: Kent County, home to the capital city of Dover, and New Castle, where the City Of Wilmington is located. Sussex County is the second largest county east of the Mississippi (now don't quote me on that, I know you thought all the large counties were in Pennsylvania... I'm just repeating what someone once told me). All right, I'm getting off topic. Delaware is a corporate registry state; that doesn't mean that a lot of corporations are based here (if that were the case, the political types up state wouldn't be so worried about the planned merger of Delaware-headquartered Dupont, and Dow Chemical (wherever it's located), and the impact that would have on Delaware's economy). What Delaware created many years ago, as a means of getting companies to incorporate in the state, was a series of courts, and to a lay person, a sometimes difficult to understand body

of law allowing those corporations under which to operate (don't worry, the lawyers understand). Did I lose you on this? Think of when Disney (yep, Mickey Mouse and Donald Duck), was sued by Michael Ovitz, a Hollywood agent, hired (and then fired), by his old bud, Michael Eisner, then CEO of Disney. The trial, for wrongful discharge, I suppose, was held in the Sussex County seat of Georgetown, where they have a court to handle this sort of matter, when the company was incorporated in Delaware, as Disney was (I know by this time, you probably are thinking about Donald Duck's nephews; what were their names again? It was Huey, Dewey and Louie. Let me set you straight, Dewey Beach, up Coastal Highway, before you get to Rehoboth, was not named for Dewey Duck; I think it was actually named after the Dewey of the Dewey Decimal System (you know, those wooden card cabinets in the old library; they're not there anymore, shows you how long it's been since you visited a library; and that time your neighbor asked you to return those Harlequin Romance novels for her... that didn't count). Yep, all those corporate jets flying in to Sussex County Airport, to see that adjudication was done at Disney (they had to extend a runway another 500 feet).

Richard Stutz is a commercial and residential Realtor with Berkshire Hathaway Gallo in Bethany Beach. He is member of the American College of Healthcare Executives and the Medical Group Management Association. Reach him at Richard@RichardStutz.com, or at 302-537-2616.



Now everyone knows, that Delaware is one of only a few states having no sales tax. Can it last? Keeping it so, is an example of the good fight waged by our elected representatives here in Sussex County. It's hard: state government (that's 90 minutes up the road in Dover) is successful at times. A few years back, my cellular phone service got a little more costly, when a tax appeared on my bill one month (it wasn't there the prior month). Don't know why it's there (I'm sure somebody does). The Cape Gazette recently reported that two members of the state legislature (from upstate, if I'm not mistaken) have proposed a tax on water, to appear one day on local property tax bills. At least we know what this tax would be for, I think. It's not on the consumption of water, but rather with the proposed tax in support of clean water. Yep, I'm in favor of that, wouldn't want to drink any other kind.

Letters!

Dear Mrs. Gerken,
February 23, 2016

I just want to express how much I enjoyed your article in "High Tide News" January 2016. I've only received one edition, but you wrote about John Middleton Clayton from Dagsboro, DE.

I've been working on our Cooper Family ancestry since about 2007. Our family's entrance to the American Colony at Delaware was about 1681. Thomas Cooper 1765-1860 served in Congress from Kent Co., DE from 1815-1817 and also served as Delaware Superior Court Judge at Dover, DE.

Thomas Cooper's son, Ezekiel 1799-1846 was an attorney in Dover, DE

Something in our line that interested me, a 5th Great Uncle, Ezekiel Cooper 1763-1847 was a Circuit Riding Preacher in the Methodist Church. He was instrumental in starting many of the early Methodist Churches in Delaware. Zeke was ordained at Barratt's Chapel, Frederica, DE.

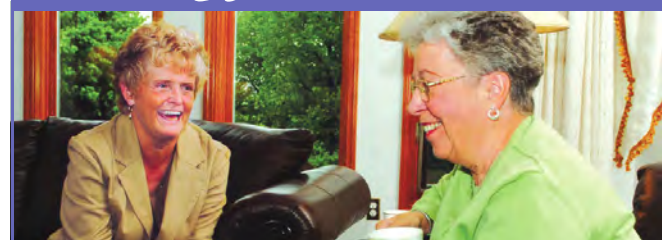
I just thought it was interesting that John M. Clayton might have been acquainted with some of the above Cooper family.

Thanks you again for your article.
Sincerely, Larry Cooper



Guitarist Chris Button performing at the Crabcake Factory on Route 54 in Fenwick DE. Originally from Long Island, Chris has made his mark on the local music scene, and can be seen regularly at several area venues including Bourbon Street on the Beach, Crabcake Factory in Fenwick, BJ's on the Water, and many more Delaware and Maryland venues.

Caring for Older Parents



You care about your aging parents. And yet, sometimes, you just don't know the best way to help them, especially when they are trying to remain independent.

Seniors Helping Seniors® in-home services is an exceptional program of care and caring that matches seniors who want to provide services with those who are looking for help.

- Meal prep/cooking
- Light housekeeping
- Companionship
- Mobility assistance
- Grocery shopping
- Pet care
- Yard Work



SENIORS Helping SENIORS®
...a way to give and to receive®

Call us today. Like getting a little help from your friends™.
Gift Certificates are available.

If you're interested in becoming a provider, we would like to hear from you too.
302-858-7330 SeniorsDelaware@aol.com



It's Not Easy Being Green But It Sure Is Delicious!



When you think about a festive green drinks for St. Patrick's Day, some of you will probably think about green beer, while others of you will think about that festive treat McDonald's rolls out, the Shamrock Shake. In my humble opinion, it's a nutritional nightmare, a festive cup-o-death with a shiny cherry on top, the farthest thing from a treat; I don't think I'm too far off. According to an infographic published by The Huffington Post, there are 54 ingredients in a Shamrock Shake. Yes, you read that correctly, FIFTY-FOUR ingredients, where almost 75% of the ingredients are dyes, additives, preservatives, and artificial flavors. If those numbers don't shock you, wait there's more; according to McDonald's, in a 22oz. cup, their most popular serving size, there are 820 calories, 23g of fat, 18g of protein, 135g of carbs, and 115g of sugar! Surely, you can't be lovin' that! Have no fear though; I'm here to the rescue! Celebrate St. Patty's Day with one of my favorite top 4 festive green drinks. I'm sure you'll find one worth lovin'.

#4 Big Kid Ecto Cooler

1 Green apple
1 Handful of kale
2 Handfuls of spinach
2 Carrots
1/2 Cucumber
1/2 Celery Stalk
1/2 Lime wedge; with only the green rind peeled
1/2 Cup Pineapple
1 Inch piece of fresh ginger; peeled
Juice all Ingredients in a juicer.
Enjoy reminiscing the days when Hi-C Ecto Cooler was the rage and you were the cool kid at the lunch table if you had one! (Shout out to all my 80's & 90's followers!)

#3 Matcha Madness

1 Tbsp matcha powder
1 Packet organic stevia in the raw (optional)
4 Ice cubes
8-10oz. Filtered water; depending on desired consistency
In a blender bottle add all ingredients. Jump around, dance, and shake your blender bottle vigorously to make sure matcha is dissolved. Sip your immune boosting, memory enhancing creation; just make sure your pinky is in the air.

Casey Lyn Goold, owner of **MindBodySpoon**, is a Board Certified Integrative Nutrition Health Coach and graduated from The Institute for Integrative Nutrition. She has studied over 100 dietary theories, practical lifestyle management techniques, and innovative coaching methods with some of the world's top health and wellness experts.



#2 Green Goddess Goodness

1/2 Avocado
Handful of spinach leaves
1/2 Organic apple; medium (Green if you want it tart, red if you want it sweet; I prefer red)
2 Inch piece of cucumber
1 Inch piece of celery
1/2 Cup pineapple; piney skin removed
1/4 Lime wedge; just the green rind peeled off
4 Ice cubes
Filtered water
Place all ingredients in a blender or large Nutribullet cup.
Fill with 8oz. water or to the MAX line if using a Nutribullet.
Blend till completely smooth.
Enjoy the deliciousness you've created in a fancy glass; like a daiquiri or martini glass!

#1 Shameless Shamrock Shake...

(say that 3 times fast)
(Adapted from Food Faith Fitness)
1/2 Avocado
1/4 Cup dairy-free vanilla ice cream (I prefer coconut milk ice cream)
1/4 tsp Peppermint extract
3/4 Cup Unsweetened dairy-free milk (I prefer coconut milk)
1/2 Cup Spinach (Usually 1 handful does the job)
1/4 Cup ice
1 Tbsp Mini chocolate chips
Place all ingredients except chocolate chips in a blender, blend till slightly smooth.

Add in chocolate chips and blend till desired consistency is reached and chips are mixed well within. I know its soooooo good, but sip it slow or you're sure to be blessed with brain freeze!

Was I right? Did you find one worth lovin'? Well, I sure hope so! Be sure to head on over to my facebook page, www.facebook.com/mindbodyspoon, and let me know what you've tried!

I lift my martini glass full of Green Goddess Goodness to all of you. May the luck of the Irish enfold you. May the blessings of Saint Patrick behold you. Cheers!

Have You Done a Grocery Store Tour Yet?

If you're still struggling with revamping your favorite foods to healthier options, you don't know what to buy at the grocery store or how to navigate it, or you're overwhelmed by cooking healthy for yourself and/or your family, give me a call! For \$150 you could take a one-on-one tour of the grocery store with me and finally put your struggles behind you! Learn what to shop for, how to navigate, and how to save while still eating healthy. Group rates are also available; makes for a great "moms day out" with you and your girlfriends, the perfect get together for a group of friends focusing on losing weight, or the best educational tool for a group of stay-at-home dads! For availability and to book your tour, contact 302-437-5262. Let's do this!



SUPPORT GROUPS

Third Monday of each month • 12:00pm
Luncheon offering support to husbands of wives with dementia

Second Wednesday of each month • 10:00am
Vision Impaired Support Group

Third Thursday of each month • 1:00pm
Alzheimer's Support Group

First Saturday of each month • 4:00pm
Alzheimer's Support Group

Every Thursday, through March 24 • 10:00am
Diabetes Education



BRANDYWINE
SENIOR LIVING
at Seaside Pointe
Life is Beautiful
A Brandywine Senior Living Community

36101 Seaside Boulevard | Rehoboth Beach, DE | 302.226.8750
Located directly behind Giant on Route One

Brandywine Senior Living has locations throughout NJ, PA, DE, CT, NY
www.Brandycare.com • 1-877-4BRANDY • *Relax...We're here.*

A Perfect Weekend in Juno Beach, Florida

By Vincent Paez

I moved from Juno Beach, Florida to Massachusetts one year ago. This is my second winter in New England, and, as you can imagine, I am missing home. Fortunately, I married a wonderful girl, who makes cold air seem warm. Also fortunately, my second home, Ocean City, is only eight hours away by car, and my wife and I do visit our dear friends there frequently. Still, nothing can beat the warmth of the Florida sun in wintertime.

Juno Beach is right on the Atlantic Ocean, only a few minutes north of West Palm Beach. If you love the beach (and I suspect you do, otherwise you would not be reading this), then this is the place for you. It's a quiet, sleepy village between lively West Palm Beach and the busy town of Jupiter. Life in Juno Beach offers peace and quiet as well as access to upbeat West Palm Beach and Jupiter nightlife. I work very hard during the week, and enjoy taking advantage of the best that the weekend has to offer. As I reminisce about my weekends at home, I'd like to offer to you my version of a perfect weekend in my home, "Juno." When I lived there, I was a single man. Today, I would be with my wonderful wife. But, at the time of my single life, if I had a journal with me, this is

how I would capture it (consider it a local's guide to Juno):

Fri EVENING

It's been a heavy week. I'm gonna de-stress tonight with a few drinks. I logged off of work at 6:00PM and walked down the street to Seasons 52. It's a very upscale, classy bar with great service and food. I went to the piano bar and ordered a glass of wine. The wine selection was fabulous. The pianist is from Brentwood, Long Island, which is the town next to where I went to high school. We chatted for fifteen minutes about the old neighborhood and how my high school beat his high school in football every year. I gave him a song request. He glanced at the tip jar. I took care of him. He played Elton John's Someone Save My Life Tonight. I started to get hungry.

I paid my bill at 8:00PM and walked across PGA Blvd to the Waterway Café, where they have fantastic seafood and a lively vibe with locals and tourists who go there to watch the boats on the Intercoastal Canal. They have an indoor bar and restaurant and an outdoor area, where the view of the boats going by is relaxing and even exciting if you like pleasure boats. I sat at the floating gazebo bar and had more wine and a Mahi Mahi sandwich, which was caught today or yesterday. A band was playing at the indoor bar. I bought the lead singer a

drink during the break and asked if he ever had guest musicians come up and play. He said, "No, the Waterway Café frowns upon that, and this is our first gig here, so I don't want to create waves." I said, "No problem," and enjoyed their second set from a bar stool. I was getting a bit tired at 10:30PM and decided to walk home. I fell asleep by 11:00PM.

Sat AM

I woke up at 8:00AM. It was another gorgeous sunny day in southern Florida. I got in the car, put the top down, and drove two minutes to the beach to jog on the sidewalk along the beach. I was pretty sweaty after a three mile run, so I jumped into the ocean to cool off. The water was about 80 degrees, calm, and so clear that I could see all the bait fish swimming around my legs. A foot-long Pompano

Author, Vincent Paez is a chemist and international businessman. He has a B.S. in Chemistry from Stony Brook University and an M.B.A. from UCLA. He speaks five languages and has lived/worked on four continents for three Fortune 500 companies. He is also a passionate musician and loves the music scene, especially in the Ocean City area. He lives in Massachusetts and spends much time in Ocean City. He has two sons attending Florida State University. ... "Go 'Noles!" He is married to a wonderful girl from Iowa, Sherri.



fish was close but would not come near me. I got out of the water, dried off, showered by the bathrooms and drove over to the Loggerhead Sea Turtle museum to see some of the rehabilitated turtles. The museum keeps sickly or injured sea turtles in large tanks and gives them antibiotics and surgery to nurse them back to health. At 10:30AM I drove back home. I prepared breakfast: a veggie omelette with spicy Sriracha sauce, OJ, toast, and coffee. Mmmmm.

Sat PM

At noon, I drove ten minutes to Singer Island's Ocean Reef Park. Singer Island is a gorgeous strip of land on the beach, where Jack Nicklaus, the famous golfer, makes his home. The sand is beautiful and the atmosphere is friendly and calm. I basked in the sun for a few hours, and realized it was time for lunch. I walked over to the Hilton Hotel on the beach, which had a very lively Tiki bar and a great waiter, Dave, who, believe or not, used to work in Ocean City at the Plim Plaza Pool Bar! We exchanged handshakes and traded stories of OC musicians, like Dave Sherman, Chris Button, Randy Lee Ashcraft, and others. After a nice plate of grouper and a rum and coke, I went back to the beach to relax in the sun. At 4:00PM, I headed home to take a nap.

Sat NIGHT

I woke up at 7:00PM ready for action. The area has so many choices for nightlife! After a shower and throwing on some cologne, I decided to head north to Jupiter. I called my favorite taxi driver and headed to Tiki 52. It's a small bar in the open air right on the bay as part of a marina. One of my favorite local bands, Mumbo Jumbo, was playing. Eddie, the guitarist and singer, gave me a smile, as he saw me walk in. During the break, he asked me if I'd like to come up and sing a song. I sang "Gimme Three Steps" by Lynyrd Skynyrd. The crowd loved it. At 8:30PM I called my taxi guy, said good-bye to Eddie, and headed to the Double Roads Tavern. The Double Roads Tavern was founded a couple of years ago by "Wolfie," from Brooklyn, NY, and Big Vince, a local blues musician, originally from Philly. The two men with a third partner established a magical combination of food, ambience, and live music. The place is always packed. Wolfie placed classic rock albums throughout the bar, and anyone can just lift the LP album out

continued on page 7



*My dad taught me to fly,
to never fear tomorrow.*

**So I will teach my son to soar and not
to accept limitations. That's why I chose
Delaware Palliative.**

If you're coping with a serious illness Delaware Palliative can help alleviate symptoms and stress. Even if you're still receiving active, curative treatment.

We help keep the focus where it needs to be, life lessons between a father and son.

See how palliative care can improve quality of life at www.delawarepalliative.org or call 800-838-9800.

**DELAWARE
PALLIATIVE**

BUILDING DELMARVA 2016 JOB & CAREER FAIR

Join the **Voice Radio Network** for their annual Building Delmarva 2016 on Saturday March 19th, 2016 from 11am-4pm at Sussex Academy, 21150 Airport Road, Georgetown, Delaware 19947. Building Delmarva is the only bilingual job fair on Delmarva bringing job seekers & employers together to help achieve their goals for a better life. This is your chance to meet with employers in an informal setting and learn more about job and internship opportunities offered by these companies and non-profit organizations where you might like to work. There will be a variety of employers looking to hire you. So if you are looking for a career or just a summer job this is the place to be. Be prepared, dress for success and join us.

This event is free to all seeking employment.

For more information contact the Voice Radio Network at 302-858-5118.



American Legion Boys State – Helping to Mold our Future Legislators

The American Legion believes there is no better way to assure the survival of our republic than to train our young people in the ideals and objectives of American government. Through the Boys State program, The American Legion teaches youth to understand and appreciate the basic principles involved in the successful management of a democratic society, thereby allowing America to remain strong and ensure freedom for future generations.

Our Delaware American Legion Boys State is a unique educational program that does not emphasize textbook learning. It focuses, instead, on participation and personal experience in a model state government, complete with governing bodies and elected public officials. The Boys State program mirrors the structure and operation Delaware's state government.

Activities include:

- A one day session for each county provided by each of the County Governments including:
 - Mock county council sessions
 - Question and answer sessions with both elected, appointed, and hired county officials and staff.
- The students elect their own state officials who then get to shadow their counterparts for a day before actually performing the duties of that office.

- Four mornings of a mock legislative session in the Delaware State House and Delaware State Senate Chambers.
- Four afternoons of classroom sessions of different aspects of state government given by those that actually perform those duties.
- A tour of Dover Air Force Base.
- Question and answer sessions with Delaware's Governor, US Senators, and other elected officials.

The legislative sessions are open to the public as are the sessions of the Delaware House and Senate.

All applicants must be recommended by one of the following:

- An American Legion Post
- Student's High School
- A Military recruiter for one of the US Academies
- A Previous attendee

Further, all applicants must meet the

following requirements:

- High School Junior boys in the upper third of their class
- Demonstrated leadership abilities
- Real interest in learning about government through practical application
- Able to attend the entire session from Sunday to Thursday
- Able to stay in the dorm at Wesley College for the entire program.

Students who have received one of the above recommendations, meet the listed requirements, and want to attend, please contact the Boys State Chairman through our application process.

Email Completed Form to:

lymanbrenner@earthlink.net

Or mail Form to:

Lyman Brenner, Boys State Chairman
PO Box 7005, Wilmington, DE 19803

Applicants will be reviewed on a case-by-case basis and notified whether or not they have been accepted.

Submitted by **James H Gallagher**, Commander, American Legion, Department of Delaware 302-745-7779

If you are a Veteran and are not a Legionnaire I invite you to visit your local Post or call me personally, and join the cause. When the



American Legion talks, politicians listen. The more members we have the more they listen and the more we can get for our brothers and sisters, and their children. "HONORABLE SERVICE MORAL OBLIGATION"

A Perfect Weekend, continued from page 6

of the cover to check it out. On the stage, my favorite band, The Shareholders, was playing. The lead singer, Eric, let me get up on stage and play a couple of songs. The crowd loved the performance, and I stayed enjoying the rest of the evening listening to The Shareholders and chatting with friends.

At midnight, I decided to go to the New York Bar & Grill, which is really close to home. It's the only late night bar in the area which always has a great pop or funk band, and the dance floor is always full. The bartenders are great, and we chatted for a while. At 1:30AM, I decided to walk home.

Sun AM

I woke up at 9:00AM and went to the pool to do my laps for 30 minutes. A buddy of mine invited me to join him at Carlin Park Beach in Jupiter. We met at 11:00AM and sat in the sun,

told jokes, and had a few beers. We went for a swim, when we noticed that everyone on the beach was pointing at us. It turns out, that they were pointing at a manatee swimming near us. My buddy saw it, but I did not. It swam away, and I missed it.

Sun PM


At 2:00PM, we decided to pack up our beach gear and head over to the Square Grouper. The Square Grouper is a tiki bar right on the inlet in Jupiter. It's an open air bar, and the favorite place to go after the beach, so everyone is in their beach attire. It was made famous with a video by country legend Alan Jackson, who filmed his video hit, "It's 5:00 Somewhere.". Another one of my favorite bands, The Andrew Morris Band, was playing mainly country music just like the original artists. We enjoyed the staff and the view of the Jupiter Lighthouse across the water. I headed home at about 5:00PM.

Sun EVENING.

After a quick check of email to make sure everything was ok at work, I went down the street to Duffy's Sports Bar to watch the Sunday Night Football game. Duffy's has countless large-screen TV's to see all the games. My team, the Philadelphia Eagles finally won. I was so happy, that I decided to take a celebratory walk on the beach. After stretching my legs on the sand, I headed home at 8:00PM to settle down and gear up for Monday business.

There are so many other things to do in the West Palm Beach area, like renting a boat, seeing a musical at the Kravis Center, visiting Lion Country Safari, seeing a music concert at the Cruzan Amphitheater, and the list goes on. It is a great place to live, and a great place to unwind after a hectic work week. I do hope you get to visit and take advantage of the Southern Florida lifestyle.

PRESENTED BY







Where



21150 AIRPORT RD. GEORGETOWN, DE 19947



BUILDING

DELMARVA 2016

JOB & CAREER FAIR

When
SATURDAY MARCH 19TH

Time
11:00AM - 4:00PM

SPONSORED BY













Need Power?

*Data, TV and Audio Wiring
Ceiling and Exhaust Fans
Indoor & Outdoor Lighting
Service Upgrades
24 Hour Emergency Service*

Call today for a free estimate.

Mention this ad
and receive
5% DISCOUNT!



**Mid-Atlantic Electrical
Services Inc.**

*Licensed, Bonded & Insured
(302) 539-0700*

Advertising your business should be fun! Call us at High Tide News today and do some unique "out of the box" advertising for your business!! Have fun with your advertising! We work for you!

**The Tidwell Group
at Morgan Stanley**

Daniel Tidwell
Senior Vice President
Financial Advisor

Jeffrey Tidwell
Financial Advisor

Nicholas Shevlund
Financial Advisor

55 Cascade Lane
Rehoboth Beach, DE 19971
302-644-6632
866-501-1943

Retirement isn't
an end. It's just
the beginning.

A long and successful career should be followed by a long and happy retirement.

As Financial Advisors, we have the experience and resources to help develop an investment plan to help you realize the retirement you envision and keep your wealth working for you. Call us today, and let's get started.

Morgan Stanley

© 2015 Morgan Stanley Smith Barney LLC. Member SIPC.
CRC1316978 10/15

Cecile Steele's Pullet Surprise, continued from page 2

buyers bidding and competing for the flocks owned by feed companies and independent growers. These auctions were carried live on local radio stations with auctioneers Harry Dukes, Jr. and Carroll Long. Competitive bidding helped keep prices for chickens at a profitable level. The Exchange served as a great marketing tool for the industry. The Exchange closed in 1969 as the feed companies and hatcheries decided to build their own processing plants, thus controlling the entire process of chicken production, including the delivery of birds to the markets. Today, the large local companies are Allen Harim, Mountaire, and Perdue.

Today, the chicken industry is the economic cornerstone of Delmarva. Poultry production provided more than 70% of Delaware's annual farm receipts. Sussex County ranks #1 in the U.S. for broiler production. There are now more than 1700 poultry farms on Delmarva with more than 4600 chicken houses. The industry creates over 13,000 jobs, generating revenue over

\$3.2 Billion. All this has been a result of Cecile's Steele's extra 450 chicks in 1923.

Cecile Steele's old broiler house is now on display at the Agriculture Museum in Dover. It is one the National Register of Historic Places as the birthplace of the poultry industry. A historic marker has been placed on the site of the Steeles' first chicken house by the Delaware Public Archives.

Sources:

"Delaware Facts 2014", Delmarva Poultry Industry, Inc., www.dpchicken.org

Delmarva's Chicken Industry: 74 Years of Progress, William H. Williams, Delmarva Poultry Industry Publications, 1998

Umer Barry's Reporter, Newspaper of Food Industry, vol. 2, No. 4, Fall 2007, www.urnerbarry.com

Delaware Agriculture Museum Exhibit, www.agriculturemuseum.org

"Delmarva and Its Poultry Industry", Chapter 7, Amanda Sprows, Eating Delmarva, Salisbury University Student Publication, MD, 2004



Credit www.findagrave.com
Cecile Long Steele

dagsboro & wallpaper i n c.

SINCE 1965

Celebrating our
50th
Anniversary

Scan the QR code to visit
dagsboropaint.com



*Specializing in
Residential &
Commercial
Flooring*

Mohawk
Floorscapes

Ceramic Tile

Armstrong
Vinyl Flooring

Congoleum Floors

Laminate &
Hardwood Floors

Hunter Douglas
Window Treatments



302-732-6661

*Free
Estimates*

Main Street, Dagsboro
dagsboropaint.com

*Sales &
Service*

Who is in charge of printing money?

Who is in charge of printing money? I bring this question up because the biggest story going on right now (and for some reason not being covered) revolves around this issue.

For starters, we'll need a little background in banking before we can get into the actual process of printing money.

Banks take in deposits and lend out those deposits in the form of a loan. They can't lend every last deposit or else they won't have any money left in their vault in the event a customer wants to take out money. So, there are rules requiring a bank to keep at least 10% of their deposits in "reserves" (think about a big vault).

The process of actual creation of money starts with a loan.

Let's imagine a world where only 2 banks exist. Small Bank has \$1,000 in customer deposits and Big Bank has \$1,000 in customer deposits. So, there is a total of \$2,000 in circulation.

A business walks into Small Bank and wants to borrow \$900 to buy a piece of equipment from his friend. The bank lends the \$900 to the business and the business pays his friend \$900, which he then deposits into his bank, Big Bank.

Big Bank now has \$1,900 in deposits. Now here is the confusing part that trips up people. How much does Small Bank have in deposits? The answer is \$1,000. And voila, money has been "printed"!

I know what you're thinking right now. How can they have \$1,000 in deposits if they just lent out \$900? The answer is, the \$900 was created (printed) and the \$1,000 in customer deposits is still \$1,000 in customer deposits. No customer came in to the bank and withdrew any money from Small Bank.

The astute reader, knowing that there is only \$100 in Small Bank's vault and knowing that they are responsible for \$1,000 in customer deposits, might be

asking themselves: what happens if someone walks in to Small Bank and withdraws more than \$100? Or, what happens if that business can't pay back the \$900 loan?

This is where the Central Bank comes in to play as a lender of last resort. Should a commercial bank like Small Bank fall into a situation where they can't cover a customer's deposit, the central bank steps in and covers the shortfall. In return for this safety net that commercial banks enjoy, the Central Bank sets rules to prohibit foolish lending.

I bring this up now, because some governments (Iceland and, more importantly, Switzerland) are debating whether or not commercial banks should be in charge of the money printing process. They're debating changing the 10% reserve to 100% which would restrict commercial banks from creating money and essentially give the government the responsibility for controlling the money supply. This is a pretty big deal because this has never been done before. Who knows what will come of this, but one thing is for sure, this shouldn't go unnoticed.

Nicholas Shevland is a Financial Advisor with the Global Wealth Management Division of Morgan Stanley in Rehoboth Beach, Delaware. The information contained in this article is not a solicitation to purchase or sell investments. Any information presented is general in nature and not intended to provide individually tailored investment advice. Information contained herein has been obtained from sources considered to be reliable, but we do not guarantee their accuracy or completeness. The views expressed herein are those of the author and may not necessarily reflect the views of Morgan Stanley Smith Barney LLC, Member SIPC, or its affiliates.

Author, **Nicholas Shevland**, is a financial advisor with The Tidwell Group at Morgan Stanley. He holds a B.S in Accounting from Wilmington University. When he's not working, you might find him teaching for the DE Money School, volunteering with the Center for Inland Bays, trying to brew the next greatest beer, playing golf at Bear Trap Dunes, or spending time with his wife.



Designer Show House



BEFORE
(check back in May we will present the AFTER pictures!)

Sponsored by the Village Improvement Association of Rehoboth Beach, DE

The Show House will include a Boutique and Garden Shoppe with articles for sale from interior and landscape designers.

14 interior and landscape designers will transform a spacious home situated on 3/4 acre.

Visitors will leave the Show House with ideas that can be used in their own homes.

Dates: May 5-8, 12-15, 19-22

Hours: 10 am to 4 pm Thursday through Sunday

Address:

52 Rolling Road
Henlopen Acres, Rehoboth Beach

Tickets: \$25

Will be available at the door and select area merchants

Groups: Groups of 4 or more are welcome on Thursday May 5, 12 and 19
Group ticket - \$20

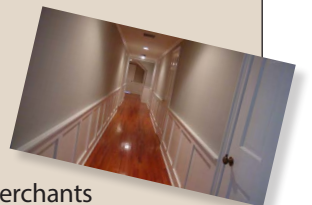
Optional lunch is available at the VIA clubhouse - \$15

Reservations are required for both.

For more information visit rehobothbeachvia.org or designershowhouse.org
call 302-227-1631

More information on the event

rehobothbeachvia.org or designershowhouse.org or call 302-227-1631



Cardiovascular Consultants of Southern Delaware



(pictured left to right)

Dr. Kenneth Sunnergren, Dr. Alberto Rosa, Dr. Firas El Sabbagh, Dr. G. Robert Myers, Dr. Heather Raff, Dr. Barry Denenberg

*Compassionate and Comprehensive Cardiac Care
Most Advanced Systems and Technology in Sussex County*

302-645-1233 • www.cvcde.com

Offices in Lewes, Millville and now Millsboro

CHURCH DIRECTORY

<http://www.hightidenews.com/church.html>

Antioch AME Church

302-732-1005
194 Clayton Avenue
Frankford, DE 19945

BAYSIDE CHAPEL

www.baysidechapel.com
302-436-7585
38288 London Avenue Unit 9
Selbyville, DE 19975

BEACON BAPTIST CHURCH

www.thebeaconbaptist.com
302-539-1216
32263 Beacon Baptist Road Route 26
Millville, DE 19967

BETHEL U.M.C.

22365 Bethel Rd.
Millsboro DE
302-344-7629
pastordouggriffith@yahoo.com

BLACKWATER FELLOWSHIP CHURCH

302-539-3945
Corner of 17 & Daisey Rd.
Roxana, DE

CC DELAWARE COAST

(A non-denominational Calvary Chapel Fellowship)
Selbyville, DE, 484-832-1001
www.ccdelcoast.org

CALVARY BAPTIST CHURCH

22860 DuPont Blvd.
Georgetown, DE 19947
302-856-3773
pastormatttolosa@gmail.com
www.calvarygeorgetown.com
www.verticalfocusde.com

CHRIST THE SAVIOR ORTHODOX CHURCH

10315 Carey Road, Berlin, MD 21811
302-537-6055

COMMUNITY CHURCH OF OAK ORCHARD

302-945-0633
www.oakorchardchurch.com
32615 Oak Orchard Road
Millsboro De 19966

COMMUNITY CHURCH AT OCEAN PINES (UNITED METHODIST)

www.ccaop.org
11227 Racetrack Road (Rt. 589)
Ocean Pines, MD 21811
410-641-5433

COMMUNITY LUTHERAN CHURCH

302-732-1156 www.clc19945.org
clcomar@mchsi.com
30897 Omar Road
Frankford, DE 19945

CORNERSTONE BIBLE CHURCH

302-542-7174 cornerstonechurchde.org
32783 Longneck Rd
Longneck, DE 19966

DAGSBORO CHURCH OF GOD

32224 Dupont Blvd
Dagsboro, DE 19939
302-732-6550 www.dagsborocog.org

FENWICK ISLAND BAPTIST CHURCH

FenwickIslandBaptist.com
36806 Lighthouse Road
Selbyville, DE 19975

FRANKFORD PRESBYTERIAN CHURCH

302-732-6774 www.ovpc.org
34 Main Street
Frankford, DE 19945

GRACE OF GOD LUTHERAN CHURCH

302-947-1044
www.goglc.org gogluth1@yahoo.com
26089 Shoppes At Long Neck Blvd.
Millsboro, DE 19966

GROOME UNITED METHODIST CHURCH

Savannah Road & Dewey Avenue
Lewes, DE 19958
302-645-6256

HEALING HEARTS MINISTRIES

28534 Dupont Blvd., Millsboro, DE 19966
Atlantic Inn Conference Room
302-519-4234

HIGH TIDE CHURCH

www.hightidechurch.org
302-245-5542
Meets at John M Clayton Elementary
Frankford, DE 19945

HOLY TRINITY ANGLICAN

11021 Worcester Highway
Berlin, MD 21811 410-641-4882
trinitycathedralberlin@gmail.com
htcanglican.org

LEWES PRESBYTERIAN CHURCH

302-645-5345
133 Kings Highway
Lewes, Delaware 19958

LONG NECK U.M. CHURCH

32051 Long Neck Road
302-945-9453.

LUTHERAN CHURCH OF OUR SAVIOR

302-227-3066 20276 Bay Vista Road
Rehoboth, DE 19971

MARINER'S BETHEL

302-539-0713 MarinersBethel.org
Rte. 26 & Central Ave.
Ocean View, DE

MIDWAY ASSEMBLY OF GOD

Route 1 and Old Postal Lane
Lewes, DE 19958 302-645-9643
www.MidwayAssemblyofGod.com

MILLVILLE UNITED METHODIST CHURCH

302-539-9077 millvillemethodistchurch.org
Corner of Rt. 26 & Club House Rd.,
Millville, DE 19967

NEW COVENANT PRESBYTERIAN CHURCH

Between Route 1 & Cape HS - Kings Hwy.
3072 Savannah East Drive
Lewes, DE 19958 302-644-6800
ncpchurchpca@gmail.com
www.ncpchurch.com

NEW LIFE BIBLE FELLOWSHIP CHURCH OF DELMARVA

Family Friendly, Christ-Exalting, Bible-Preaching www.newlife-bfc.org
302-945-8145, 24771 Cannon Rd.
Long Neck, DE 19966
andrewbarnessr@gmail.com

OCEAN VIEW CHURCH OF CHRIST

302-539-7468
OceanViewChurchofChrist.com
Corner of Rt. 26 & West Ave.
Ocean View, DE 19970

OCEAN VIEW PRESBYTERIAN CHURCH

302-539-3455 www.ovpc.org
67 Central Avenue
Ocean View, DE 19970

OUR LADY OF GUADALUPE

Rt. 17/ Roxana Rd
Office@stannsbethany.org

PENINSULA COMMUNITY CHURCH

302-436-4522 www.pccministry.org
revodom9@gmail.com
28574 Cypress Road
Selbyville, DE 19975

ST. ANN'S CATHOLIC CHURCH

Office@stannsbethany.org

ST. PETER'S EPISCOPAL CHURCH

302-645-8479
2nd & Market St., Lewes, DE 19958

ST. MARTHA'S EPISCOPAL CHURCH

302-539-7444 StMarthasBethany.org
Maplewood & Pennsylvania Ave
Bethany Beach, DE 19930

SAINT JAMES ANGLICAN CHURCH

Rectory 302-238-7364
23269 Park Avenue
Georgetown, DE 19947

SAINT MARK'S EPISCOPAL CHURCH

Stat & Ellis Millsboro, DE 19966
302 430-8231

SAINT MARTIN'S EPISCOPAL CHURCH

75 W. Church Street Selbyville, DE 19975
302 934-9464 or 302 430-8231

ST. MATTHEWS BY-THE-SEA

United Methodist Church
Coastal Hwy & Dagsboro St.
Fenwick Inland, DE 19944
302.537.1402 www.smbts.org

SALEM UNITED METHODIST CHURCH

302-436-8412, www.sumc.com
29 West Church Street
Selbyville, DE 19975

SONRISE CHURCH

www.sonrise.cc Stephen Decatur High
School - Cafeteria, Rt. 50, East Berlin, MD

SOUND UNITED METHODIST CHURCH

37894 Lighthouse Road(Route 54)
Selbyville, DE 19975
pascft@gmail.com
www.facebook.com/SoundUMC

ST. GEORGE'S METHODIST CHURCH

Omar Road & Atlantic Avenue
Ocean View, DE 19970
302-539-7491

THE ODYSSEY CHURCH

2 Discovery Lane (P.O. Box 492)
Selbyville, DE 19975 (302) 519-3867
Info@TheOdysseyChurch.com www.TheOdysseyChurch.com

THE BIBLE CHURCH OF CHRIST, INC.

302-732-3351
Diamond Acres, Dagsboro, DE 19939

THE FATHER'S HOUSE YOUR CHURCH FOR LIFE

302-381-3362 TheFathersHouseDE.com
7 Main Street., Frankford, DE 19945

The Journey Wesleyan Church

255 Wilson Hwy., P.O. Box 371
Millsboro, DE 19966
10:00 a.m. Sunday

The Lewes Church of CHRIST at The CROSSING

15183 Coastal Hwy
Milton, DE 19968
302.645.0327 www.lccnow.com
lcc@lccnow.com

THE RIVER

35175 Roxana Road
Frankford, Delaware 19945
(302) 436-8841 www.riveronline.org

UNITARIAN UNIVERSALISTS OF SOUTHERN DELAWARE

30486 Lewes Georgetown Hwy. (Rte. 9)
Lewes, DE 19958
(302) 313-5838 uusd.org

UNITED FAITH CHURCH OF DELIVERANCE

302-663-0373
214 Main Street, Millsboro, Delaware
ufcodmillsboro@gmail.com

UNITY OF REHOBOTH BEACH

717-579-2612
14904 Coastal Hwy., Milton, DE 19968
sansmagic@verizon.net

WESTMINSTER PRESBYTERIAN CHURCH

302-227-2109
King Charles Ave., Rehoboth, DE 19971

ZION ROXANA UNITED METHODIST CHURCH

35914 Zion Church Road,
Frankford, DE 19945
302-436-5451 pascft@gmail.com

Church news, events, and schedules are online at: <http://www.hightidenews.com/church.html>
Scan QR code on your mobile device for quick access to Church services times and Church events!



In like a Lion Out like a Lamb Insights by Nancy

When I think of the month of March I am reminded of the saying, "In like a lion, out like a lamb". According to weather folk lore, if the month starts off with cold and unpleasant weather hopefully it should end in warm, spring like, sunny days. The key word of course is, hope.

Upon further pondering I am lead to Isaiah 53:1-7 in which Jesus took upon Himself, our sin and pain and bore our suffering. "He was pierced for our transgressions, and crushed for our iniquities; the punishment that brought us peace was on Him, and by His wounds

we are healed....Jesus was oppressed and afflicted, yet he did not open his mouth; He was led like a lamb to the slaughter.

The true nature of Jesus is shown as both the conquering Lion of Judah and the innocent Lamb, who was slain for you and me, (Revelations 5:5-6). As Easter approaches may we experience the joy, peace and HOPE in celebration of the knowledge of God's everlasting promise of our Resurrected Lord who conquered death once and for all, for those who believe in Him! Hallelujah! The Lord has risen, He has risen indeed!

Market your Business with your own Newspaper!

Introductory package includes:

- ◆ a four-page newspaper entirely focused on **your** business
- ◆ 2 professional 30-second video commercials
- ◆ 1/6th page ad in *High Tide News* for 3-months

If you would like to receive complete information, watch the AR video attached to this ad (*video includes a surprise coupon!*), and contact us at: 302-727-0390, news@hightidenews.com, or fill out the information form at www.hightidenews.com



Thank you for supporting *High Tide News*, Sussex County's Interactive Newspaper, bringing print to life!



Our Passion is Real Estate

DelMarVa
RESORTS REALTY
OUR PASSION IS REAL ESTATE



Emma Payne
Broker/Owner
DelMarVa Resorts Realty
1632 Savannah Rd Suite 2
Lewes, De. 19958
Office: 302-644-3687

Mobile: 302-530-4374 Fax: 855-811-6121
office@delmarvaresortsrealty.com
www.delmarvaresortsrealty.com



Kim Bowden
Realtor/Settlement Coord.
DelMarVa Resorts Realty
Mobile: 302-462-5284
kimcoastalde@gmail.com

Like us on [facebook](#) at: [facebook/dmvrr](#)
Access the MLS on our facebook page to look for more details and other listings.

Thinking of buying or selling a house?

We'll make sure you get the best deal!

Call today to schedule your no obligation buyer consultation or to obtain a free market analysis. From first time buyer to assisting with selling an estate home, we can help you with all of your real estate needs. Call us today, like us on facebook, and visit our website!



STOP IN AND TAKE A TOUR! OPEN HOUSES IN MARCH! CHECK OUR WEBSITE FOR DATES AND TIMES!

Milton – builder model: 3/2 in Wagamons West Shore. Hardwood and tile. Granite/stainless, 2 car garage. Our Builder Elite Homes will customize your dream home that can be built on any lot! This house is loaded. No contractor grade items to be found. Call today for more information. <http://Wagamons.CanByours.com>



SELLER SAYS BRING ALL OFFERS! REDUCED BELOW APPRAISED VALUE! Located in charming community of Oak Orchard.

This home has lots of charm! Double lot w/pool! Large bedrooms! Take a stroll to Serendipity for dinner & look out over the bay. INCOME potential! Appraisal on file. Deeded boat ramp rights!



Dogwood Acres Rd: Great for first time homebuyer! Quiet community just a short drive to the beach and shopping. Laminate floors and fresh paint! Sit on your back deck and read a book or take your boat out for a ride – community access to boat ramp to Indian River Bay. Call for your personal showing today!



Shady Park - MLS 700611 You don't need to spend millions or even hundreds to live near the beach! Enjoy this 2BR, 1BA mobile located just minutes from the beach in Shady Park! www.delmarvaresortsrealty.com/kim

To see other properties visit delmarvaresortsrealty.com



PREMIER LEWES LOCATION IN EAGLE POINT close to shopping, beaches, and local attractions. This carriage house style unit boasts a two car garage, breakfast nook, first floor master bedroom suite, gas fireplace, large loft area, outdoor rear deck, and a full basement. The community has a recreation center with a pool that offers year round fun for the whole family. Excellent rental potential for investors or perfect for a second home with easy access to the beaches and all summer activities. Call today for your personal tour.



Let us guide you home

NMLS: 1186147
State License: 012631
15 N Walnut Street
Milford, DE 19963

Caliber Home Loans is built on the Strength & Stability of our Experience, Innovation, and Culture while specializing in custom loan options that fit individual financial needs.

Laura Lord
Loan Officer

NMLS: 460224

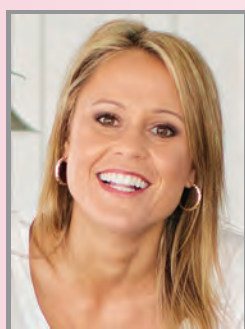
Phone: 302-841-5316

laura.lord@caliberhomeloans.com

<https://www.caliberhomeloans.com/llord>



Delmarva Broadcasting's 6th Annual WOMEN'S EXPO



March 19, 2016 • Noon - 4pm
Nassau Valley Vineyards • Lewes, DE

GUEST SPEAKER:

Marnie Oursler Marnie Custom Homes
Professional Builder Magazine's "40 Under 40"

SERVICE DIRECTORY

SAVE THIS SECTION FOR FUTURE USE.
MENTION THAT YOU SAW THE AD IN *HIGH TIDE NEWS*!

DAGSBORO PAINT & WALLPAPER

Paint, Wallpaper, Flooring,
Window Treatments
Dagsboro, DE 19939
302-732-6661 or 302-732-3333

MORGAN STANLEY

Nicholas Shevland, Financial Advisor
55 Cascade Lane
Rehoboth Beach DE 19971
302-644-6600 or 800-258-3131

DELMARVA RESORTS REALTY

Our Passion is Real Estate
Emma Payne, Broker/Owner
1632 Savannah Rd Suite 2, Lewes, De. 19958
Office: 302-644-3687 Fax: 855-811-6121
Mobile: 302-530-4374
office@delmarvaresortsrealty.com
www.delmarvaresortsrealty.com
Kim Bowden, Realtor/Settlement Coord.
302-462-5284 klm@dmvrr.com

BRANDYWINE SENIOR LIVING

Life is Beautiful
36101 Seaside Blvd,
Rehoboth Beach DE 19971 302-226-8750
www.brandywineseniorliving.com

DISCOVER BANK

Open an account in minutes at
MyDiscoverBank.com or visit
502 E. Market St., Greenwood DE 19950
(Use offer code: TIDE16P)

CALIBER HOME LOANS

Let us guide you home
Laura Lord, Loan Officer
Phone: 302-841-5316
laura.lord@caliberhomeloans.com
www.CaliberHomeLoans.com

DELAWARE PALLIATIVE

See how palliative care can improve quality
of life at www.delawarepalliative.org or
call 800-838-9800

MID-ATLANTIC ELECTRICAL SERVICES

Need Power? *Licensed, Bonded & Insured*
Call today for a free estimate
302 539-0700

MILLVILLE PET STOP

Millvillepetstop@yahoo.com
Millville phone: 302.539.9382
35167 Atlantic Ave
Milleville, DE 19967

FENWICK PET STOP

Fenwickpetstop@yahoo.com
Fenwick Island: 302.581.0046
1200 Coastal Highway
Fenwick Island, DE 19944

SENIORS HELPING SENIORS

Delivers Excellent Home Care
...a way to give and to receive
302-858-7330
www.seniorshelpingseniors.com

CARDIOVASCULAR CONSULTANTS

Compassionate and Comprehensive
Cardiac Care
Offices in Lewes, Millville and Millsboro
302-645-1233
www.cvcde.com

Be part of the
High Tide News
family of advertisers!
302-727-0390

Save up for
whatever moves you.

Make sure your money's keeping up
with you—open a Discover® CD. You'll
lock into high rates that consistently
beat the National Averages.¹ Terms are
flexible, from 3 months to 10 years.

DISCOVER
BANK

Open an account in minutes at
MyDiscoverBank.com or visit
502 E. Market St., Greenwood, DE 19950.
Use offer code: TIDE16P.

1.15% APY*
12-month Discover® CD

2.20% APY*
5-Year Discover® CD

*Annual Percentage Yield (APY) is accurate as of 12/16/2015.
Applies to personal account only. Fees could reduce earnings
on the account. Rates may change at any time. A penalty may
be charged for early withdrawal. Minimum opening balance
is \$2,500.

¹National CD Average APYs based on rates of top 50 U.S.
banks (ranked by total deposits) provided by Informa
Research Services, Inc., as of 12/16/2015.



Member
FDIC